



PEARSON FERRIER®
BLACK LABEL


6 Ringley Road, Whitefield, M45 7LB
Offers Over £1,500,000

Ringley Road Whitefield

Ringley Road, Whitefield is a substantial five bedroom detached house, set back from this highly regarded main road in large gardens and grounds in this sought after residential location within easy reach of local amenities and a short drive onward to the motorway network. The house has a charming history thought to have been built back in 1905 for Colonel Hyde of the Manchester Brewing dynasty and still retains character albeit the house has been modernised over the decades of ownership, the house will require a comprehensive scheme of refurbishment throughout, but given the plot and setting the potential is superb. The house has also been adapted with a separate access and the installation of a lift leading directly into a first floor self contained apartment. The house is double glazed and warmed by gas fired central heating the accommodation briefly comprises; spacious reception hallway with moulded ceiling return stairs to the first floor and access into a small cellar, living room with hand carved oak fireplace coved ceiling, delph rack, dining room with moulded ceiling wooden flooring, snug, breakfast kitchen, inner hallway with separate front door, two guests wc/cloaks, lift access, games room with fitted bar, conservatory leading into the rear gardens, large utility room and workshop, first floor, main bedroom with ensuite bathroom, four further bedrooms and shower room, apartment briefly comprising, bedroom, study, kitchen and shower room. Outside there is a large parking forecourt and to the rear large enclosed gardens, mostly lawned with patio and borders. Freehold Property/Council Tax Band G



Energy Efficiency Rating

	Current	Potential
Very energy efficient - lower running costs		
(92 plus) A		
(81-91) B		
(69-80) C		72
(55-68) D	57	
(39-54) E		
(21-38) F		
(1-20) G		
Not energy efficient - higher running costs		
England & Wales	EU Directive 2002/91/EC	





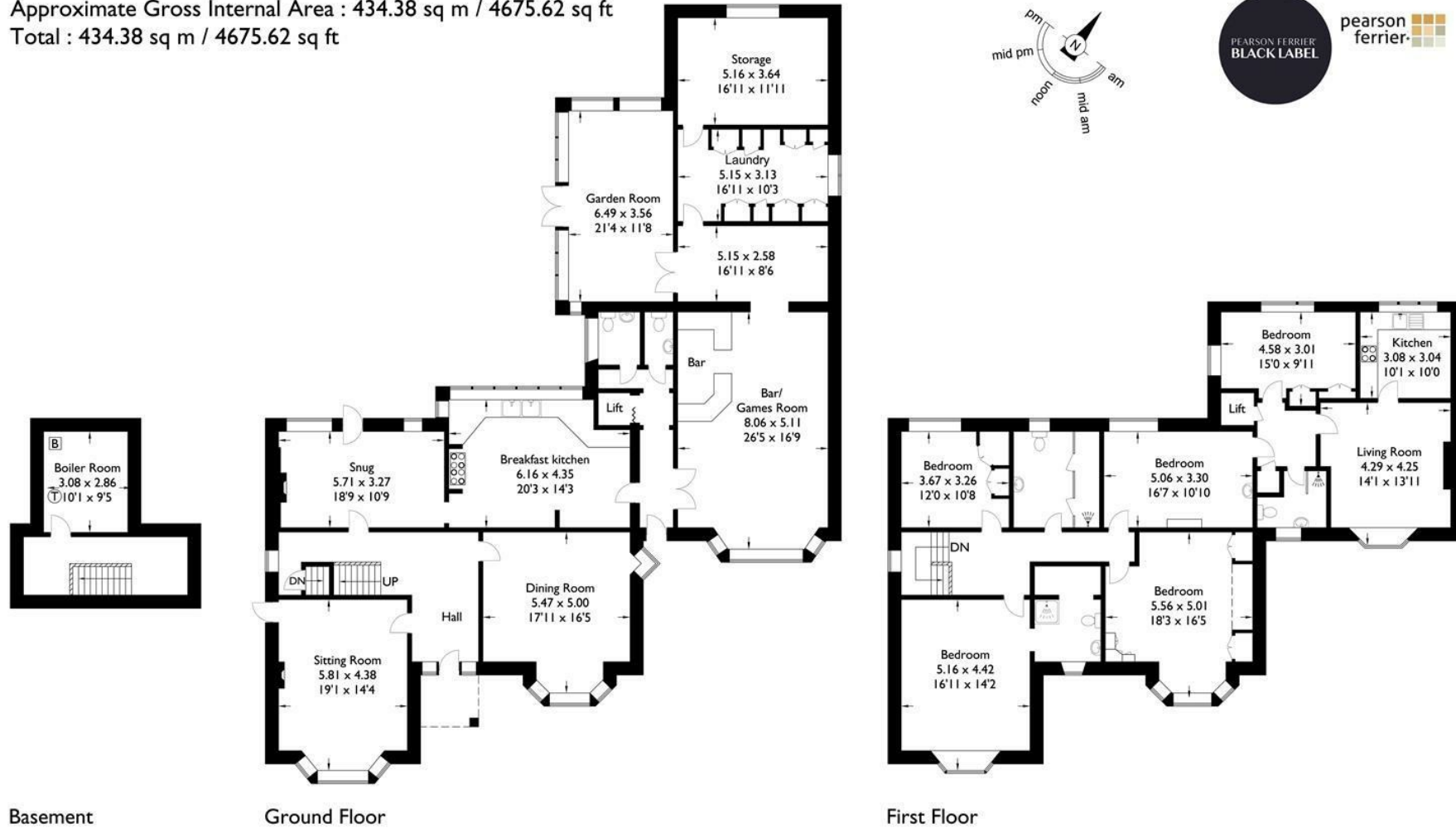
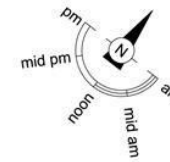




6 Ringley Road

Approximate Gross Internal Area : 434.38 sq m / 4675.62 sq ft

Total : 434.38 sq m / 4675.62 sq ft



For illustrative purposes only. Not to scale.
 Whilst every attempt was made to ensure the accuracy of the floor plan,
 all measurements are approximate and no
 responsibility is taken for any error.



PEARSON FERRIER®
BLACK LABEL

Ramsbottom Office
11 Bolton Street, Ramsbottom, BL0 9HU
Telephone: 01706 822630
Email: ramsbottom@pearsonferrier.co.uk
www.pearsonferrier.co.uk/blacklabel

All statements contained in these particulars are for indicative purposes only and are made without responsibility on the part of Pearson Ferrier and the vendors of this property and are not to be relied on as statements or representations of fact. Potential purchasers should satisfy themselves by inspection or otherwise as to the accuracy of such details contained in these particulars.